

# 6Q1/6Q2/6Q2L USER MANUAL

2017-02-20

版本号	日期	作者	描述
-----	----	----	----

1.0	2017-2-20	陈敏	6Q1/6Q2/6Q2L 控制器使用手册
-----	-----------	----	----------------------

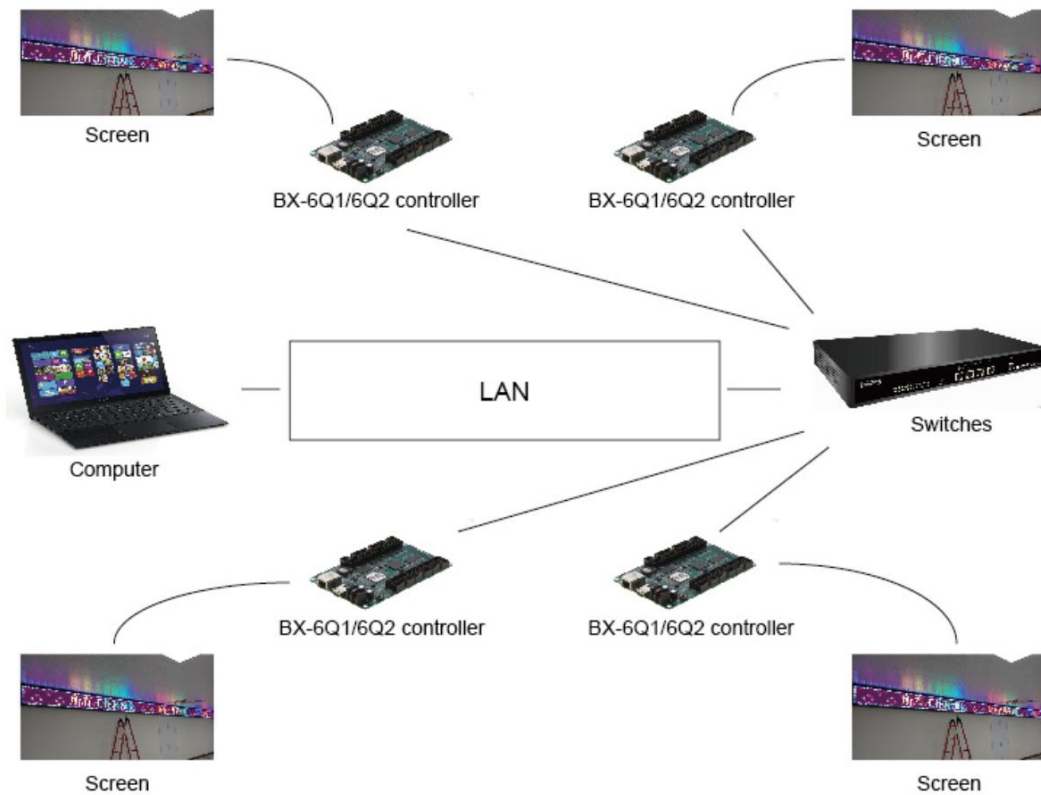
## CATALOG

1 . Hardware connection :.....	4
2 . Set screen parameters.....	6
3 . Set IP information.....	8
4 . Scan mode configuration.....	9
5 . Edit and sending program.....	10

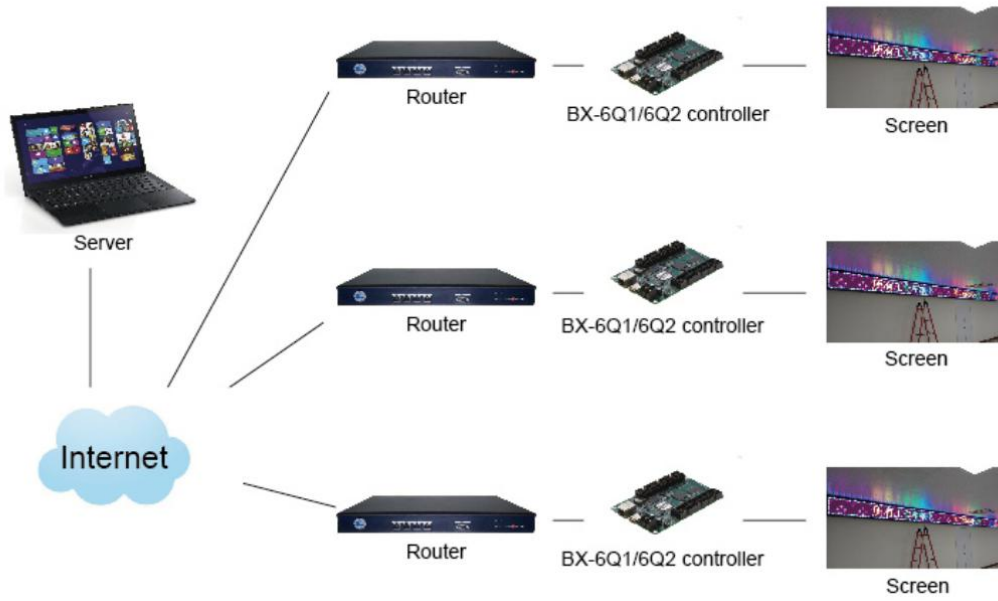
# 6Q1/6Q2/6Q2L USER MANUAL

## 1 . Hardware connection :

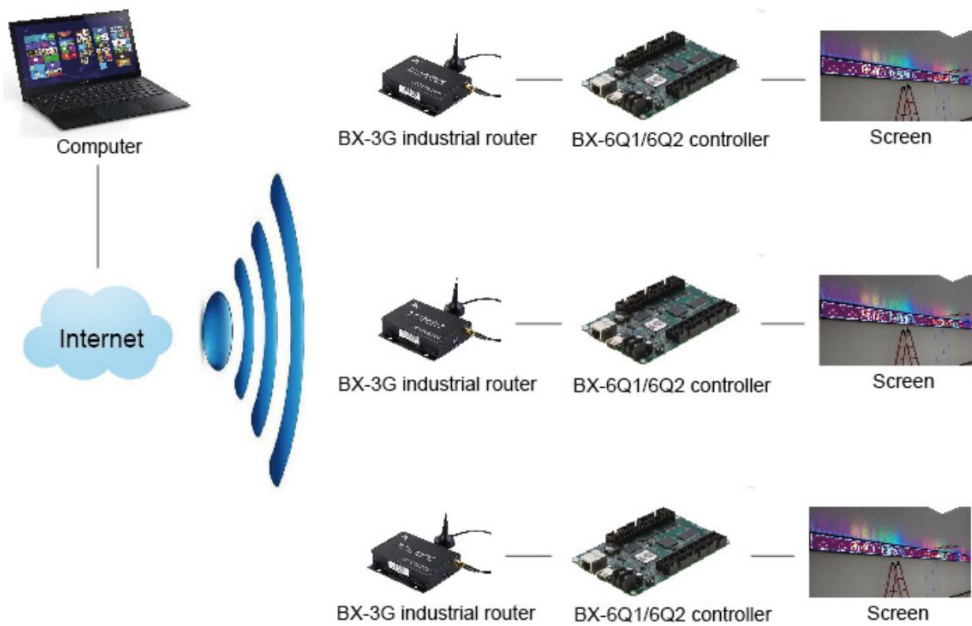
LAN mode connection:



Server mode connection :



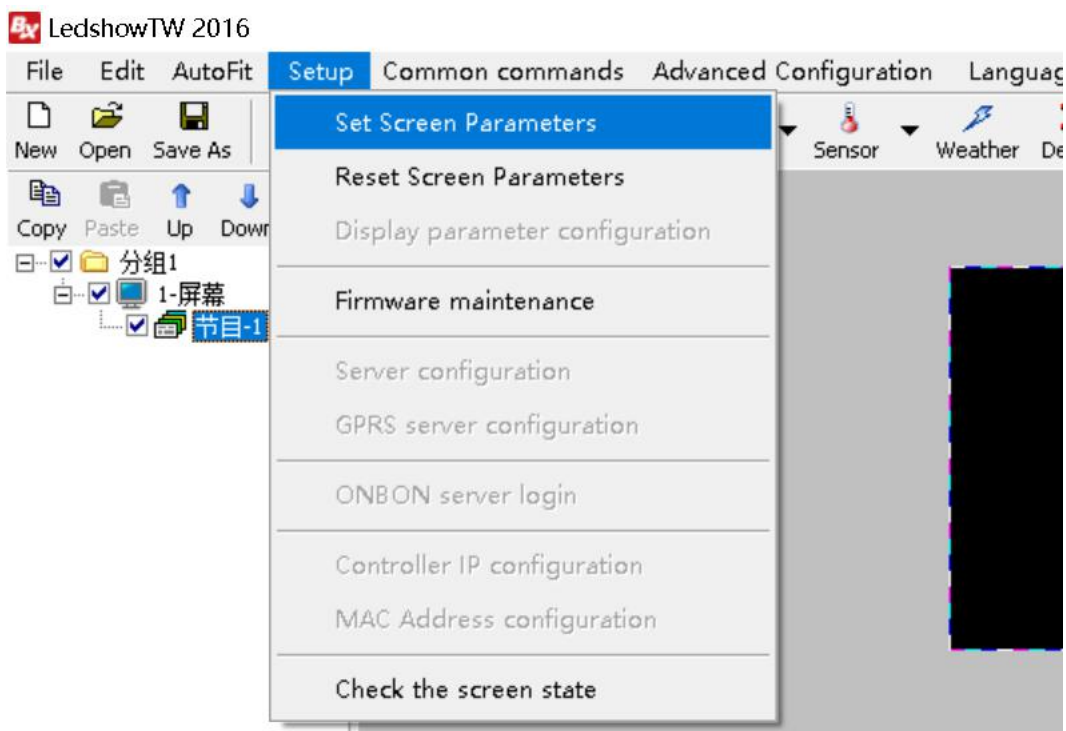
Wireless mode connection :



## 2 . Set screen parameters

### Step 1:

Open the Ledshow TW 2016 ,Click "set" then" set screen parameters" :



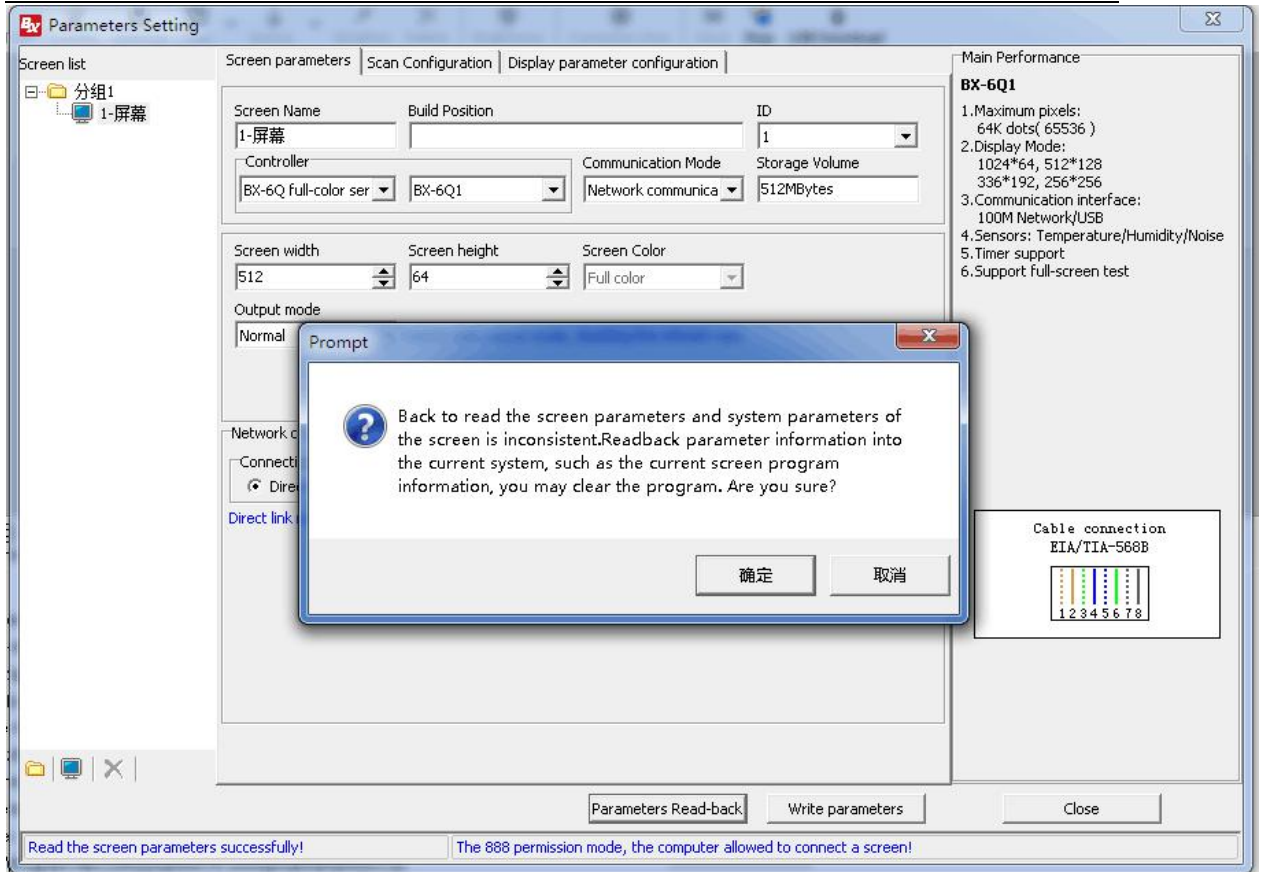
### Step 2

Input password" 888" ,then click ok :



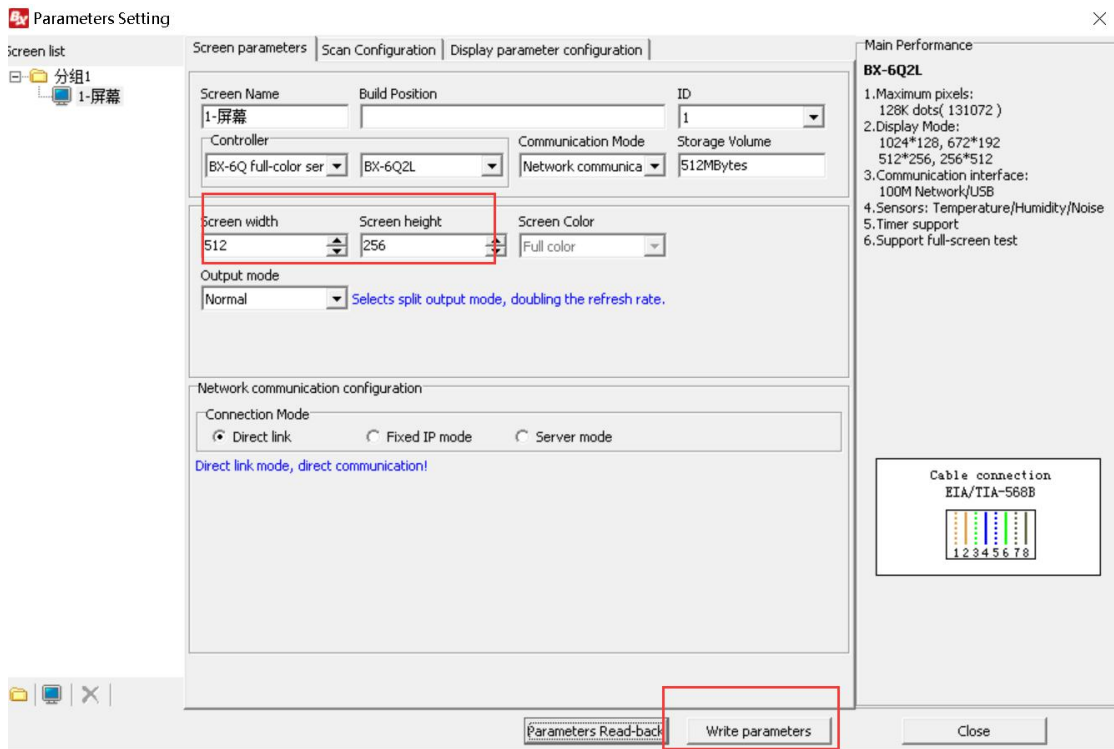
### Step 3

Automatically read-back the screen parameters then click ok button then add the screen :



**Step 4**

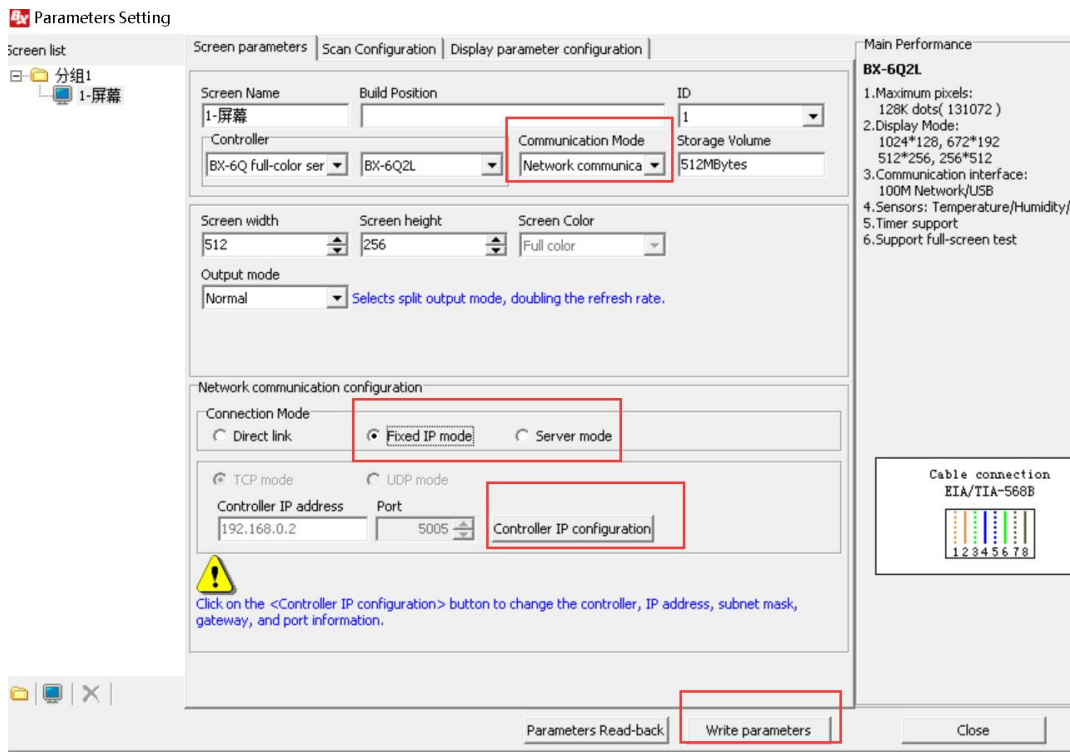
Set the screen width and height, click "upload parameters" then prompt that "upload parameters successfully" as below:



### 3 . Set IP information

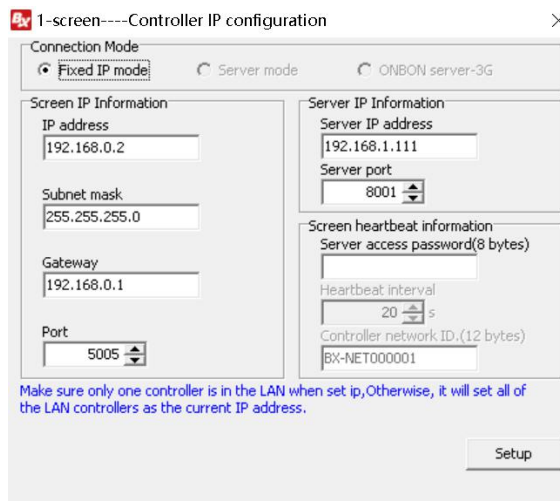
#### Step 1

Go to the set screen parameters, and select the communication mode, select the communication mode firstly, then select the network mode, then click the "set controller IP" :



#### Step 2

Go to the page of controller IP configuration, write the IP information, click "set" button, then finish the IP setting:

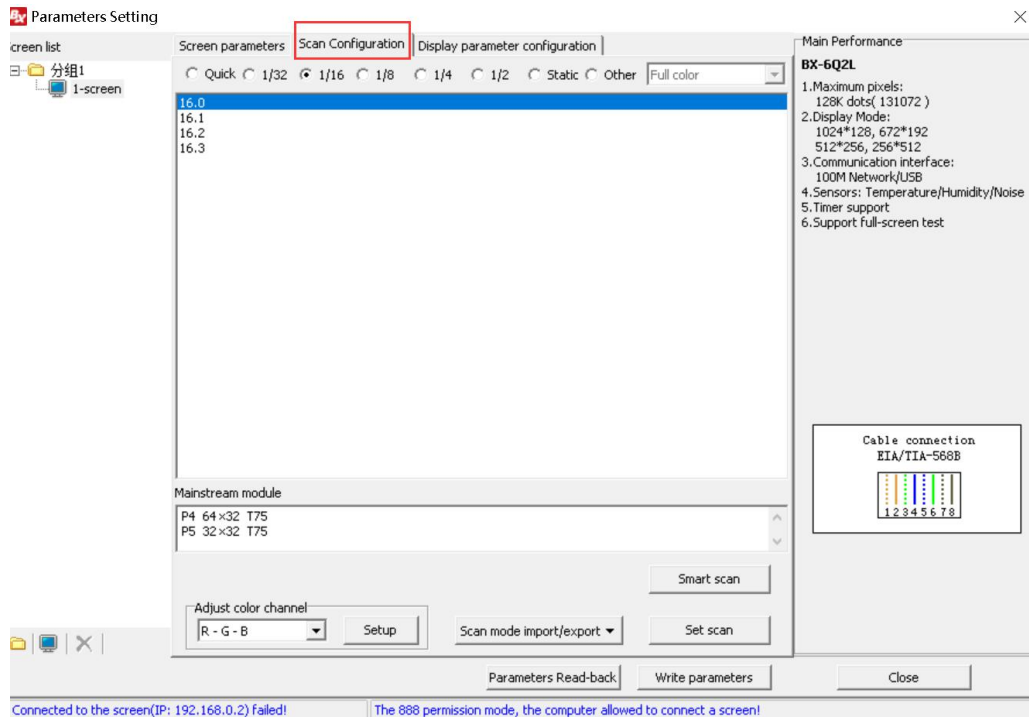




## 4 . Scan mode configuration

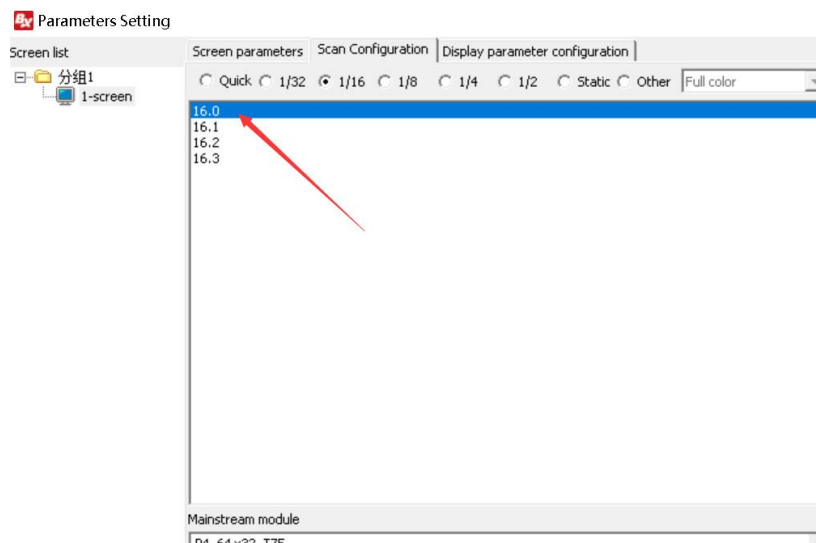
### Step 1

Go to set screen parameters then click “scan configuration” :



### Step 2

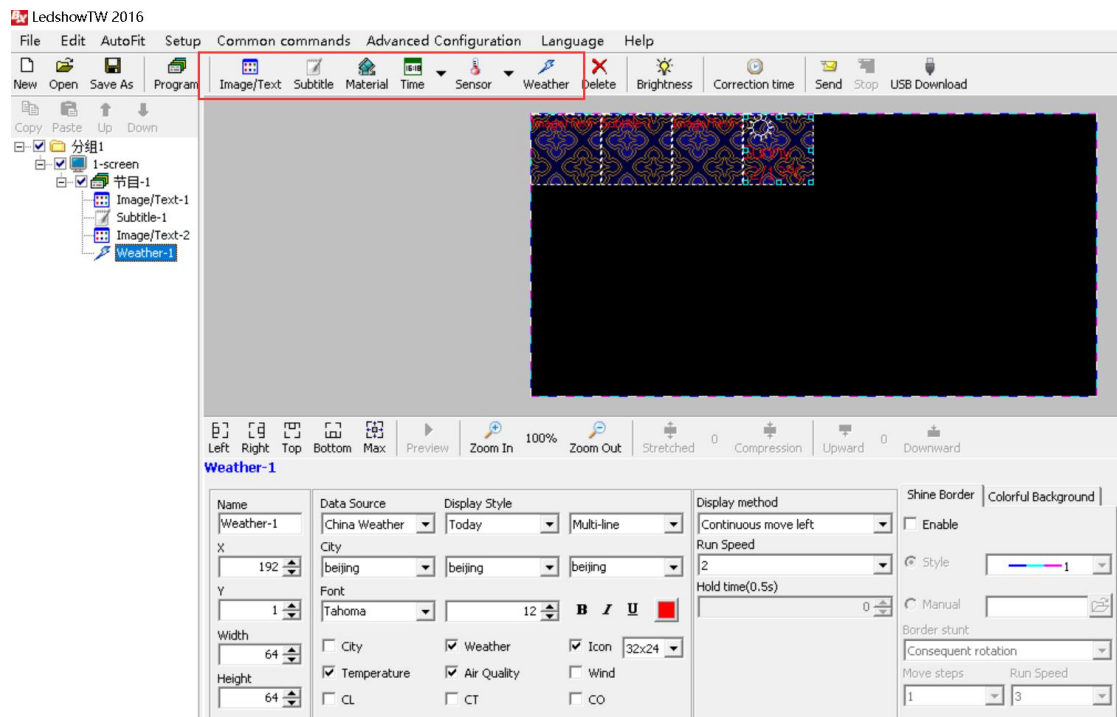
Select the controller scan mode according to module scan mode ,then click“ upload the scan configuration” screen will display as follow :



## 5 . Edit and sending program

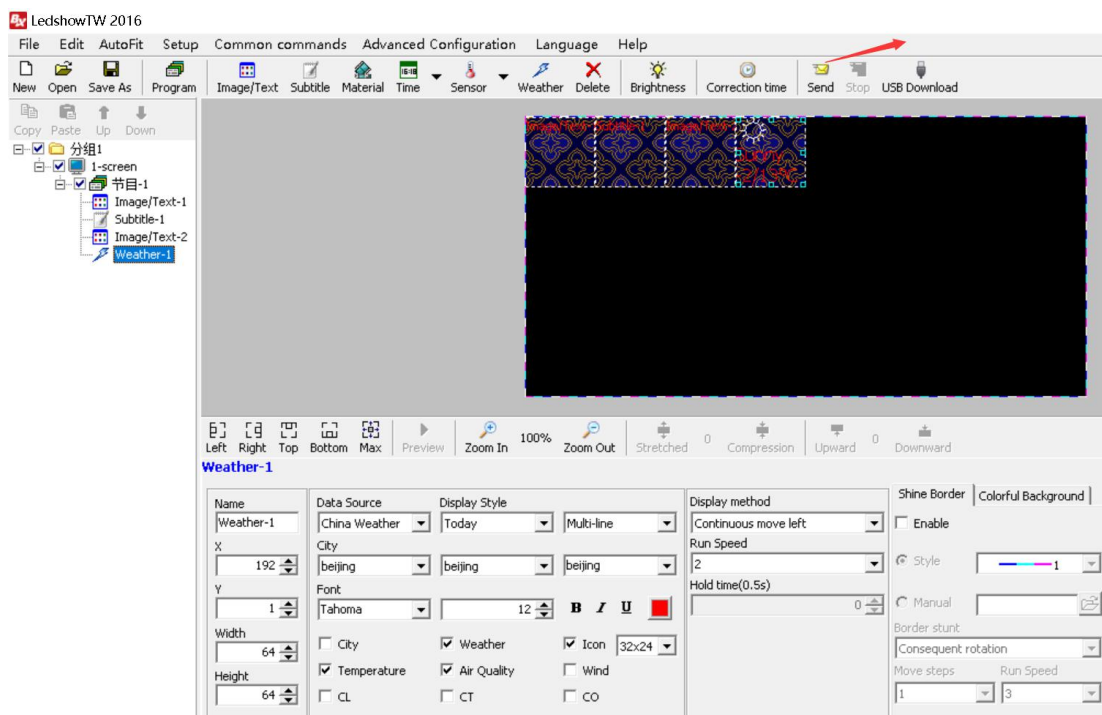
### Step 1

Select the program as : picture&text ,subtitle, time zone, weather zone, timing zone and lunar calendar as following;



### Step 2

Click" sending" then edit the program then sending it to the controller:



## Contact us

### SHANGHAI ONBON TECHNOLOGY CO.,LTD

#### Shanghai Head Office Add:

Floor 7, Tower 88, 1199#, North Qinzhou Road, Xuhui District, Shanghai, China

#### Shenzhen Branch Office Add:

Room 309, B#, Shiyuan Sanlian industrial park, Baoan District, Shenzhen

Tel: 0086 15921814956    0086 15800379719    0086 15850358027

Email: [onbon@onbonbx.com](mailto:onbon@onbonbx.com)

Website: <http://www.onbonbx.com>    <http://onbonbx.en.alibaba.com>

<https://www.aliexpress.com/store/811333>

Mobile website: <http://www.onbonbx.com/m-en>

